

# ARK IN THE PARK PEST MONITORING GUIDE

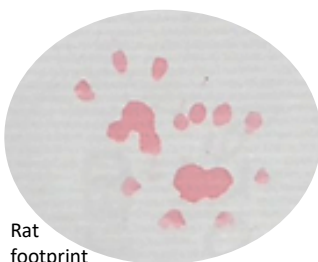
## Black Tunnels (cardboard with black ink)

### **Field Gear:**

- Kauri kit (trigene, brush)
- Repair kit + hammer (orange tape & ▲ )
- Gloves – surgical
- Hand sanitiser
- Charged mobile phone (optional)
- Radio – charged
- First aid kit
- Outdoor clothes & boots
- Spare warm clothes + rain gear
- Food & water

### **Monitoring Gear:**

- Monitoring line map
- 1 inked card per tunnel
- Peanut butter (PB)
- Rubber band(s) for cards
- Spare wire tunnel pegs/ loops
- Plastic bag to contain gear
- Pencil



Rat footprint

### **Methods: AT BASE**

1. Fill in intentions book
2. Collect all gear + record radio in book
3. Number cards before leaving base

### **Methods: DAY 1 - SET UP**

4. Navigate to line start
5. Refresh track markers & flagging tape where needed
6. Clear tunnel entrances, ensure set flat and alongside log/natural run-way if possible
7. Pin tunnel down
8. Open & flatten card, place PB in centre (photo below)
9. Place card ink-side up in tunnel

### **Methods: DAY 2 - COLLECTION**

10. After at-base methods, navigate to line
11. Refresh track markers & flagging tape where needed
12. Check each card for correct numbering
13. Collect cards, fold in half if dry
14. Note if tunnel/card is out of place
15. Return cards to base to dry



### **Health and Safety:**

**Key hazards:** rat urine & faeces (hand sanitiser + gloves), field work (intentions, radio, first aid kit, map)

**Phone numbers:** Ark office 09 810 7014, Ranger station 09 810 8133, Arataki Visitor Centre 09 892 4789

**Radio channels:** 5 = line of sight      1, 2, 3, 4 = open channels for Waitākere Ranges & Arataki Visitor Centre

# ARK IN THE PARK PEST MONITORING GUIDE

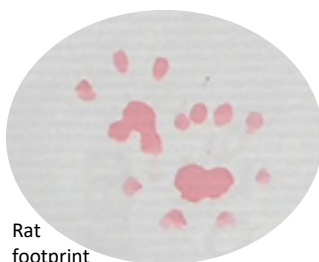
## White Tunnels (paper with red dye)

### **Field Gear:**

- Kauri kit (trigene, brush)
- Repair kit + hammer (orange tape & ▲ )
- Gloves – surgical
- Hand sanitiser
- Charged mobile phone (optional)
- Radio – charged
- First aid kit
- Outdoor clothes & boots
- Spare warm clothes + rain gear
- Food & water

### **Monitoring Gear:**

- Monitoring line map
- 2 white papers per tunnel
- Peanut butter (PB)
- Red dye (diluted 1:2) in spray bottle
- Spare sponges (est. 5 for 10 tunnels)
- Old book to collect white papers
- Pencil



Rat footprint

### **Methods: AT BASE**

1. Fill in intentions book
2. Collect all gear + record radio in book
3. Number papers before leaving base

### **Methods: DAY 1 - SET UP**

4. Navigate to line start
5. Refresh track markers & flagging tape where needed
6. Clear tunnel entrances, ensure set flat and alongside log/natural run-way if possible
7. Remove tunnel lid, soak sponge in red dye
8. Place PB on leaf in centre (photo below)
9. Place one paper at each end of tunnel
10. Replace lid, pin tunnel down

### **Methods: DAY 2 - COLLECTION**

11. After at-base methods, navigate to line
12. Refresh track markers & flagging tape where needed
13. Check each paper for correct numbering
14. Collect papers, place in book
15. Note if tunnel/card is out of place
16. Return papers to base to dry



### **Health and Safety:**

**Key hazards:** rat urine & faeces (hand sanitiser + gloves), field work (intentions, radio, first aid kit, map)

**Phone numbers:** Ark office 09 810 7014, Ranger station 09 810 8133, Arataki Visitor Centre 09 892 4789

**Radio channels:** 5 = line of sight 1, 2, 3, 4 = open channels for Waitākere Ranges & Arataki Visitor Centre